



6 seater passenger car  
PV 60

Wheelbase ..... 2850 mm  
Overall length ..... 4725 »  
Overall width ..... 1800 »  
Track, front ..... 1400 »  
Track, rear ..... 1515 »  
Weight-dry ..... 1430 kos

*Engine.* 6-cylinder side valve ED engine developing 92 B.H.P. at 3500 r.p.m. Bore and stroke 84.14×110 mm. Displacement 3.67 liters. Compression ratio 6.5:1. Seven bearing crankshaft. Aluminium pistons. Full pressure lubrication by gear driven pump. Downdraught carburetor with thermostat fitted to manifold heat control.

*Clutch.* Single dry plate 9".

*Gear box.* 3 speed synchro-mesh. Steering wheel gearshift.

*Rear axle.* Semi-floating. Hypoid gear drive. Ratio 4.1:1.

*Front suspension.* Independent front wheels with coil springs. Ride stabilizer and double-acting hydraulic shock absorbers.

*Rear suspension.* Semi-elliptic springs with double-acting hydraulic telescopic shock absorbers.

*Wheels and tires.* Pressed steel disc wheels. 16×4" rims. 6.00×16" tires.

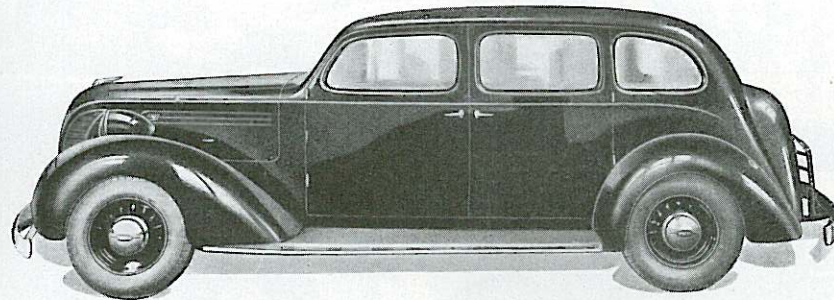
*Brakes.* Lockheed hydraulic four-wheel brakes. 10" drums.

*Fuel capacity.* 50 liters.

*Electrical system.* 6 volt. 95 amp.hour battery. 130 watt generator with automatic voltage control.

*Frame.* X member with partly box sectioned side rails, completely welded.

*Body.* All steel body. Swivelling wing windows fitted both front and rear give draught-free ventilation. Roomy luggage trunk.



8 seater passenger car  
PV 801 and 802

Wheelbase ..... 3250 mm  
Overall length ..... 5150 »  
Overall width ..... 1820 »  
Track, front ..... 1470 »  
Track, rear ..... 1524 »  
Weight-dry ..... 1750 kos

*Engine.* 6-cylinder side valve EC engine developing 88 B.H.P. at 3,400 r.p.m. Bore and stroke 84.14×110 mm. Displacement 3.67 liters. Compression ratio 6.05:1. Seven bearing crankshaft. Full pressure lubrication by gear driven pump. Down-draught carburetor with thermostat fitted to manifold heat control.

*Clutch.* Single dry plate 10".

*Gear box.* 3 speed synchro-mesh.

*Rear axle.* Semi-floating. Hypoid drive gear. Standard ratio 4.45:1, optional 4.73:1.

*Suspension.* Semi-elliptic springs. Double-acting hydraulic telescopic shock absorbers.

*Wheels and tires.* Pressed steel disc wheels. 16×5" rims. 6.50×16" tires.

*Brakes.* Lockheed hydraulic four-wheel brakes. 12" drums.

*Fuel capacity.* 60 liters.

*Electrical system.* 6 volt. 114 amp.hour battery. 130 watt generator with automatic voltage control.

*Body.* All steel. PV 801 with glass partition for driver fitted with sliding window. PV 802 without partition. Both models equipped with two folding seats and adjustable front bench type seat. Adjustable individual front seats can be fitted to PV 802 at an extra cost.

If the car is intended to be used for stretcher cases, half the rear seat is detachable, and by lifting the trunk lid the stretcher can be pushed into the car. PV 801 is also equipped with a heater and defroster. Roomy luggage trunk.